



Transportation Enhancements and Scenic Byways: Connecting Federal Programs

National Transportation
Enhancements Clearinghouse

August 25, 2009

So What are Transportation Enhancements?

- Projects that relate to surface transportation
- Establishing this relationship is easy for scenic byways!



The 12 Types of Transportation Enhancement Activities

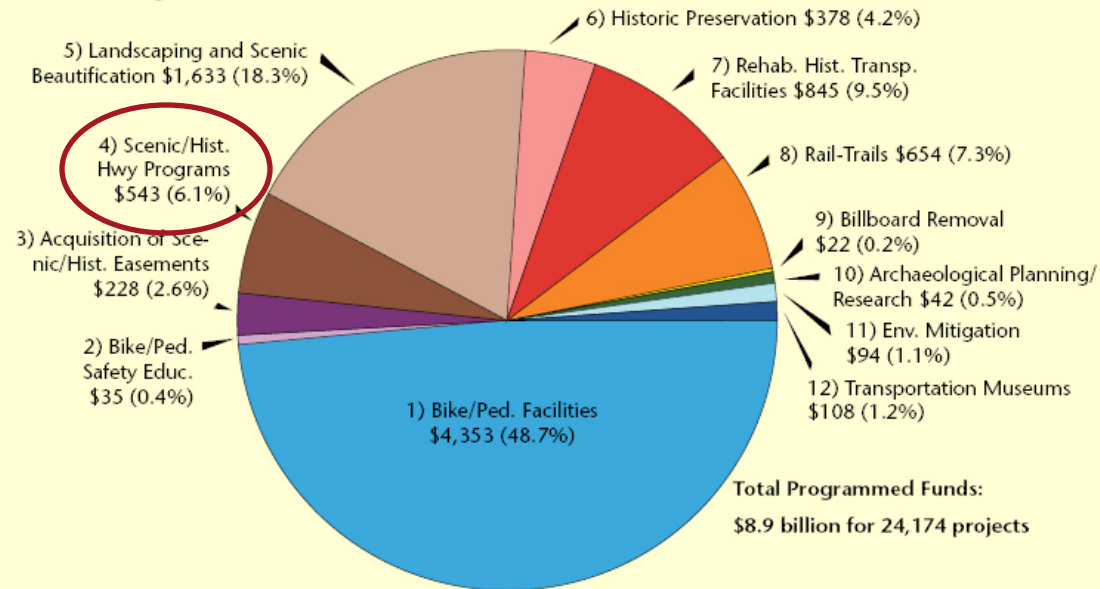
The term Transportation Enhancement Activity means any of the following as they relate to surface transportation.

- 1 **Pedestrians and bicycle facilities:** New or reconstructed sidewalks, walkways, curb ramps, bike lane striping, paved shoulders, bike parking, bus racks, off-road trails, bike and pedestrian bridges and underpasses.
- 2 **Safety and educational activities for pedestrians and bicyclists:** Programs designed to encourage walking and bicycling by providing potential users with education and safety instruction through classes, pamphlets, and signs.
- 3 **Acquisition of scenic easements and scenic or historic sites, including historic battlefields:** Acquisition of scenic land easements, vistas, and landscapes, including historic battlefields; purchase of building in historic districts or historic properties.
- 4 **Scenic or historic highway programs including tourist and welcome center facilities:** Construction of turnouts, overlooks, visitor centers, and viewing areas, designation signs, and markers.
- 5 **Landscaping and other scenic beautification:** Street furniture, lighting, public art, and landscaping along street, highways, trails, waterfronts, and gateways.
- 6 **Historic preservation:** Preservation of buildings and façades in historic districts; restoration and reuse of historic building for transportation-related purposes; access improvements to historic sites and buildings.
- 7 **Rehabilitation and operation of historic transportation buildings, structures, or facilities:** Restoration of historic railroad depots, bus stations, canals, canal towpaths, historic canal bridges, and lighthouses; rehabilitation of rail trestles, tunnels and bridges.
- 8 **Preservation of abandoned railway corridors and the conversion and use of the corridors for pedestrian or bicycle trails:** Acquiring railroad rights-of-way; planning, designing and constructing multi-use trails; developing rail-with-trail projects; purchasing unused railroad property for reuse as trails.
- 9 **Inventory, control, and removal of outdoor advertising:** Billboard inventories or removal of nonconforming billboards.
- 10 **Archaeological planning and research:** Research, preservation planning and interpretation; developing interpretive signs, exhibits, guides, inventories, and surveys.
- 11 **Environmental mitigation to address water pollution due to highway runoff or to reduce vehicle-caused wildlife mortality while maintaining habitat connectivity:** Runoff pollution mitigation, soil erosion controls, detention and sediment basins, river cleanups, and wildlife crossings.
- 12 **Establishment of transportation museums:** Construction of transportation museums, including the conversion of railroad stations or historic properties to museums with transportation themes and exhibits, or the purchase of transportation related artifacts.



The National Picture

Figure 6: Distribution of Federal Funds by TE Activity
FY 1992 through FY 2008 (Federal funds in millions)



Project Count for Each Category:

1	2	3	4	5	6	7	8	9	10	11	12
12,186	199	369	1,018	5,127	1,180	1,969	1,274	62	190	353	247



Loess Hills Scenic Byway Panels



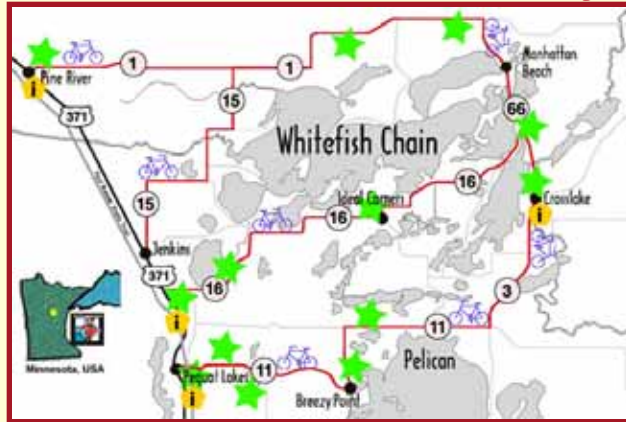
The 12 Types of Transportation Enhancement Activities

The term Transportation Enhancement Activity means any of the following as they relate to surface transportation.

- 1 Pedestrians and bicycle facilities:** New or reconstructed sidewalks, walkways, curb ramps, bike lane striping, paved shoulders, bike parking, bus racks, off-road trails, bike and pedestrian bridges and underpasses.
- 2 Safety and educational activities for pedestrians and bicyclists:** Programs designed to encourage walking and bicycling by providing potential users with education and safety instruction through classes, pamphlets, and signs.
- 3 Acquisition of scenic easements and scenic or historic sites, including historic battlefields:** Acquisition of scenic land easements, vistas, and landscapes, including historic battlefields; purchase of building in historic districts or historic properties.
- 4 Scenic or historic highway programs including tourist and welcome center facilities:** Construction of turnouts, overlooks, visitor centers, and viewing areas, designation signs, and markers.
- 5 Landscaping and other scenic beautification:** Street furniture, lighting, public art, and landscaping along street, highways, trails, waterfronts, and gateways.
- 6 Historic preservation:** Preservation of buildings and façades in historic districts; restoration and reuse of historic building for transportation-related purposes; access improvements to historic sites and buildings.
- 7 Rehabilitation and operation of historic transportation buildings, structures, or facilities:** Restoration of historic railroad depots, bus stations, canals, canal towpaths, historic canal bridges, and lighthouses; rehabilitation of rail trestles, tunnels and bridges.
- 8 Preservation of abandoned railway corridors and the conversion and use of the corridors for pedestrian or bicycle trails:** Acquiring railroad rights-of-way; planning, designing and constructing multi-use trails; developing rail-with-trail projects; purchasing unused railroad property for reuse as trails.
- 9 Inventory, control, and removal of outdoor advertising:** Billboard inventories or removal of nonconforming billboards.
- 10 Archaeological planning and research:** Research, preservation planning and interpretation; developing interpretive signs, exhibits, guides, inventories, and surveys.
- 11 Environmental mitigation to address water pollution due to highway runoff or to reduce vehicle-caused wildlife mortality while maintaining habitat connectivity:** Runoff pollution mitigation, soil erosion controls, detention and sediment basins, river cleanups, and wildlife crossings.
- 12 Establishment of transportation museums:** Construction of transportation museums, including the conversion of railroad stations or historic properties to museums with transportation themes and exhibits, or the purchase of transportation related artifacts.



Paul Bunyan Scenic Byway



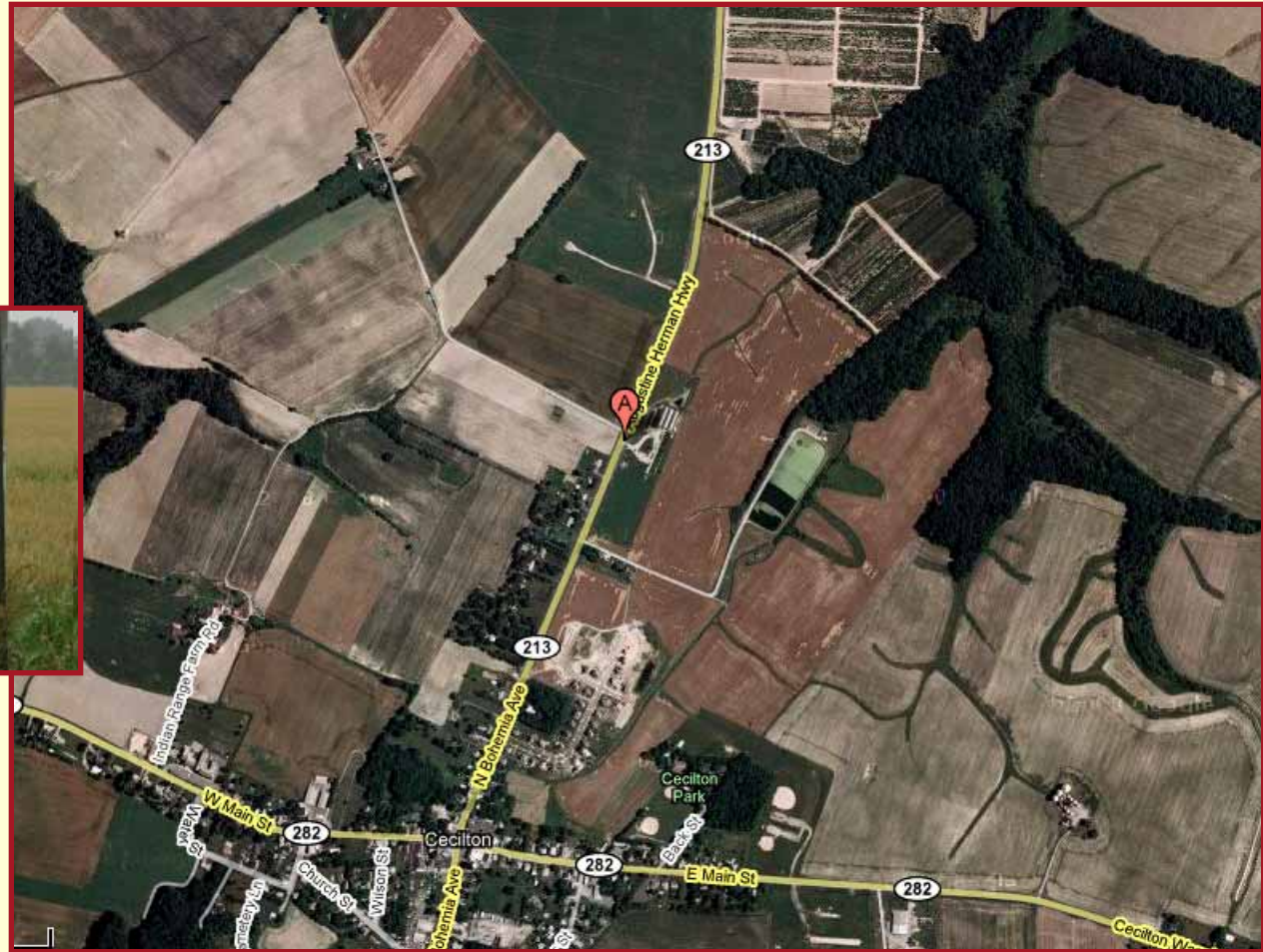
The 12 Types of Transportation Enhancement Activities

The term Transportation Enhancement Activity means any of the following as they relate to surface transportation.

- 1 **Pedestrians and bicycle facilities:** New or reconstructed sidewalks, walkways, curb ramps, bike lane striping, paved shoulders, bike parking, bus racks, off-road trails, bike and pedestrian bridges and underpasses.
- 2 **Safety and educational activities for pedestrians and bicyclists:** Programs designed to encourage walking and bicycling by providing potential users with education and safety instruction through classes, pamphlets, and signs.
- 3 **Acquisition of scenic easements and scenic or historic sites, including historic battlefields:** Acquisition of scenic land easements, vistas, and landscapes, including historic battlefields; purchase of building in historic districts or historic properties.
- 4 **Scenic or historic highway programs including tourist and welcome center facilities:** Construction of turnouts, overlooks, visitor centers, and viewing areas, designation signs, and markers.
- 5 **Landscaping and other scenic beautification:** Street furniture, lighting, public art, and landscaping along street, highways, trails, waterfronts, and gateways.
- 6 **Historic preservation:** Preservation of buildings and façades in historic districts; restoration and reuse of historic building for transportation-related purposes; access improvements to historic sites and buildings.
- 7 **Rehabilitation and operation of historic transportation buildings, structures, or facilities:** Restoration of historic railroad depots, bus stations, canals, canal towpaths, historic canal bridges, and lighthouses; rehabilitation of rail trestles, tunnels and bridges.
- 8 **Preservation of abandoned railway corridors and the conversion and use of the corridors for pedestrian or bicycle trails:** Acquiring railroad rights-of-way; planning, designing and constructing multi-use trails; developing rail-with-trail projects; purchasing unused railroad property for reuse as trails.
- 9 **Inventory, control, and removal of outdoor advertising:** Billboard inventories or removal of nonconforming billboards.
- 10 **Archaeological planning and research:** Research, preservation planning and interpretation; developing interpretive signs, exhibits, guides, inventories, and surveys.
- 11 **Environmental mitigation to address water pollution due to highway runoff or to reduce vehicle-caused wildlife mortality while maintaining habitat connectivity:** Runoff pollution mitigation, soil erosion controls, detention and sediment basins, river cleanups, and wildlife crossings.
- 12 **Establishment of transportation museums:** Construction of transportation museums, including the conversion of railroad stations or historic properties to museums with transportation themes and exhibits, or the purchase of transportation related artifacts.



Chesapeake Country Scenic Byway



The 12 Types of Transportation Enhancement Activities

The term Transportation Enhancement Activity means any of the following as they relate to surface transportation.

- 1 **Pedestrians and bicycle facilities:** New or reconstructed sidewalks, walkways, curb ramps, bike lane striping, paved shoulders, bike parking, bus racks, off-road trails, bike and pedestrian bridges and underpasses.
- 2 **Safety and educational activities for pedestrians and bicyclists:** Programs designed to encourage walking and bicycling by providing potential users with education and safety instruction through classes, pamphlets, and signs.
- 3 **Acquisition of scenic easements and scenic or historic sites, including historic battlefields:** Acquisition of scenic land easements, vistas, and landscapes, including historic battlefields; purchase of building in historic districts or historic properties.
- 4 **Scenic or historic highway programs including tourist and welcome center facilities:** Construction of turnouts, overlooks, visitor centers, and viewing areas, designation signs, and markers.
- 5 **Landscaping and other scenic beautification:** Street furniture, lighting, public art, and landscaping along street, highways, trails, waterfronts, and gateways.
- 6 **Historic preservation:** Preservation of buildings and façades in historic districts; restoration and reuse of historic building for transportation-related purposes; access improvements to historic sites and buildings.
- 7 **Rehabilitation and operation of historic transportation buildings, structures, or facilities:** Restoration of historic railroad depots, bus stations, canals, canal towpaths, historic canal bridges, and lighthouses; rehabilitation of rail trestles, tunnels and bridges.
- 8 **Preservation of abandoned railway corridors and the conversion and use of the corridors for pedestrian or bicycle trails:** Acquiring railroad rights-of-way; planning, designing and constructing multi-use trails; developing rail-with-trail projects; purchasing unused railroad property for reuse as trails.
- 9 **Inventory, control, and removal of outdoor advertising:** Billboard inventories or removal of nonconforming billboards.
- 10 **Archaeological planning and research:** Research, preservation planning and interpretation; developing interpretive signs, exhibits, guides, inventories, and surveys.
- 11 **Environmental mitigation to address water pollution due to highway runoff or to reduce vehicle-caused wildlife mortality while maintaining habitat connectivity:** Runoff pollution mitigation, soil erosion controls, detention and sediment basins, river cleanups, and wildlife crossings.
- 12 **Establishment of transportation museums:** Construction of transportation museums, including the conversion of railroad stations or historic properties to museums with transportation themes and exhibits, or the purchase of transportation related artifacts.



Old National Road

- Burying utilities
- Landscaped medians
- Side trees
- Street furniture
- Lighting



The 12 Types of Transportation Enhancement Activities

The term Transportation Enhancement Activity means any of the following as they relate to surface transportation.

- 1 **Pedestrians and bicycle facilities:** New or reconstructed sidewalks, walkways, curb ramps, bike lane striping, paved shoulders, bike parking, bus racks, off-road trails, bike and pedestrian bridges and underpasses.
- 2 **Safety and educational activities for pedestrians and bicyclists:** Programs designed to encourage walking and bicycling by providing potential users with education and safety instruction through classes, pamphlets, and signs.
- 3 **Acquisition of scenic easements and scenic or historic sites, including historic battlefields:** Acquisition of scenic land easements, vistas, and landscapes, including historic battlefields; purchase of building in historic districts or historic properties.
- 4 **Scenic or historic highway programs including tourist and welcome center facilities:** Construction of turnouts, overlooks, visitor centers, and viewing areas, designation signs, and markers.
- 5 **Landscaping and other scenic beautification:** Street furniture, lighting, public art, and landscaping along street, highways, trails, waterfronts, and gateways.
- 6 **Historic preservation:** Preservation of buildings and façades in historic districts; restoration and reuse of historic building for transportation-related purposes; access improvements to historic sites and buildings.
- 7 **Rehabilitation and operation of historic transportation buildings, structures, or facilities:** Restoration of historic railroad depots, bus stations, canals, canal towpaths, historic canal bridges, and lighthouses; rehabilitation of rail trestles, tunnels and bridges.
- 8 **Preservation of abandoned railway corridors and the conversion and use of the corridors for pedestrian or bicycle trails:** Acquiring railroad rights-of-way; planning, designing and constructing multi-use trails; developing rail-with-trail projects; purchasing unused railroad property for reuse as trails.
- 9 **Inventory, control, and removal of outdoor advertising:** Billboard inventories or removal of nonconforming billboards.
- 10 **Archaeological planning and research:** Research, preservation planning and interpretation; developing interpretive signs, exhibits, guides, inventories, and surveys.
- 11 **Environmental mitigation to address water pollution due to highway runoff or to reduce vehicle-caused wildlife mortality while maintaining habitat connectivity:** Runoff pollution mitigation, soil erosion controls, detention and sediment basins, river cleanups, and wildlife crossings.
- 12 **Establishment of transportation museums:** Construction of transportation museums, including the conversion of railroad stations or historic properties to museums with transportation themes and exhibits, or the purchase of transportation related artifacts.



Historic Columbia River Byway



The 12 Types of Transportation Enhancement Activities

The term Transportation Enhancement Activity means any of the following as they relate to surface transportation.

- 1 **Pedestrians and bicycle facilities:** New or reconstructed sidewalks, walkways, curb ramps, bike lane striping, paved shoulders, bike parking, bus racks, off-road trails, bike and pedestrian bridges and underpasses.
- 2 **Safety and educational activities for pedestrians and bicyclists:** Programs designed to encourage walking and bicycling by providing potential users with education and safety instruction through classes, pamphlets, and signs.
- 3 **Acquisition of scenic easements and scenic or historic sites, including historic battlefields:** Acquisition of scenic land easements, vistas, and landscapes, including historic battlefields; purchase of building in historic districts or historic properties.
- 4 **Scenic or historic highway programs including tourist and welcome center facilities:** Construction of turnouts, overlooks, visitor centers, and viewing areas, designation signs, and markers.
- 5 **Landscaping and other scenic beautification:** Street furniture, lighting, public art, and landscaping along street, highways, trails, waterfronts, and gateways.
- 6 **Historic preservation:** Preservation of buildings and façades in historic districts; restoration and reuse of historic building for transportation-related purposes; access improvements to historic sites and buildings.
- 7 **Rehabilitation and operation of historic transportation buildings, structures, or facilities:** Restoration of historic railroad depots, bus stations, canals, canal towpaths, historic canal bridges, and lighthouses; rehabilitation of rail trestles, tunnels and bridges.
- 8 **Preservation of abandoned railway corridors and the conversion and use of the corridors for pedestrian or bicycle trails:** Acquiring railroad rights-of-way; planning, designing and constructing multi-use trails; developing rail-with-trail projects; purchasing unused railroad property for reuse as trails.
- 9 **Inventory, control, and removal of outdoor advertising:** Billboard inventories or removal of nonconforming billboards.
- 10 **Archaeological planning and research:** Research, preservation planning and interpretation; developing interpretive signs, exhibits, guides, inventories, and surveys.
- 11 **Environmental mitigation to address water pollution due to highway runoff or to reduce vehicle-caused wildlife mortality while maintaining habitat connectivity:** Runoff pollution mitigation, soil erosion controls, detention and sediment basins, river cleanups, and wildlife crossings.
- 12 **Establishment of transportation museums:** Construction of transportation museums, including the conversion of railroad stations or historic properties to museums with transportation themes and exhibits, or the purchase of transportation related artifacts.



Chinook Scenic Byway and White Pass Scenic Byway



The 12 Types of Transportation Enhancement Activities

The term Transportation Enhancement Activity means any of the following as they relate to surface transportation.

- 1 **Pedestrians and bicycle facilities:** New or reconstructed sidewalks, walkways, curb ramps, bike lane striping, paved shoulders, bike parking, bus racks, off-road trails, bike and pedestrian bridges and underpasses.
- 2 **Safety and educational activities for pedestrians and bicyclists:** Programs designed to encourage walking and bicycling by providing potential users with education and safety instruction through classes, pamphlets, and signs.
- 3 **Acquisition of scenic easements and scenic or historic sites, including historic battlefields:** Acquisition of scenic land easements, vistas, and landscapes, including historic battlefields; purchase of building in historic districts or historic properties.
- 4 **Scenic or historic highway programs including tourist and welcome center facilities:** Construction of turnouts, overlooks, visitor centers, and viewing areas, designation signs, and markers.
- 5 **Landscaping and other scenic beautification:** Street furniture, lighting, public art, and landscaping along street, highways, trails, waterfronts, and gateways.
- 6 **Historic preservation:** Preservation of buildings and façades in historic districts; restoration and reuse of historic building for transportation-related purposes; access improvements to historic sites and buildings.
- 7 **Rehabilitation and operation of historic transportation buildings, structures, or facilities:** Restoration of historic railroad depots, bus stations, canals, canal towpaths, historic canal bridges, and lighthouses; rehabilitation of rail trestles, tunnels and bridges.
- 8 **Preservation of abandoned railway corridors and the conversion and use of the corridors for pedestrian or bicycle trails:** Acquiring railroad rights-of-way; planning, designing and constructing multi-use trails; developing rail-with-trail projects; purchasing unused railroad property for reuse as trails.
- 9 **Inventory, control, and removal of outdoor advertising:** Billboard inventories or removal of nonconforming billboards.
- 10 **Archaeological planning and research:** Research, preservation planning and interpretation; developing interpretive signs, exhibits, guides, inventories, and surveys.
- 11 **Environmental mitigation to address water pollution due to highway runoff or to reduce vehicle-caused wildlife mortality while maintaining habitat connectivity:** Runoff pollution mitigation, soil erosion controls, detention and sediment basins, river cleanups, and wildlife crossings.
- 12 **Establishment of transportation museums:** Construction of transportation museums, including the conversion of railroad stations or historic properties to museums with transportation themes and exhibits, or the purchase of transportation related artifacts.





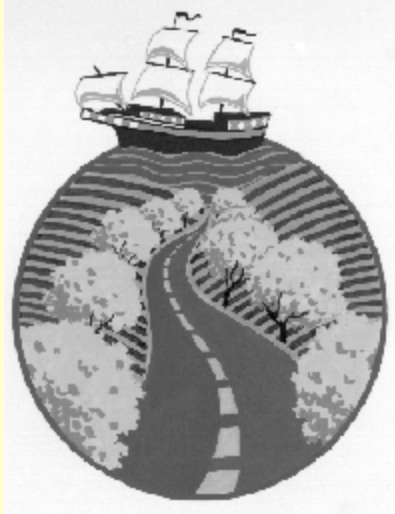
The 12 Types of Transportation Enhancement Activities

The term Transportation Enhancement Activity means any of the following as they relate to surface transportation.

- 1 **Pedestrians and bicycle facilities:** New or reconstructed sidewalks, walkways, curb ramps, bike lane striping, paved shoulders, bike parking, bus racks, off-road trails, bike and pedestrian bridges and underpasses.
- 2 **Safety and educational activities for pedestrians and bicyclists:** Programs designed to encourage walking and bicycling by providing potential users with education and safety instruction through classes, pamphlets, and signs.
- 3 **Acquisition of scenic easements and scenic or historic sites, including historic battlefields:** Acquisition of scenic land easements, vistas, and landscapes, including historic battlefields; purchase of building in historic districts or historic properties.
- 4 **Scenic or historic highway programs including tourist and welcome center facilities:** Construction of turnouts, overlooks, visitor centers, and viewing areas, designation signs, and markers.
- 5 **Landscaping and other scenic beautification:** Street furniture, lighting, public art, and landscaping along street, highways, trails, waterfronts, and gateways.
- 6 **Historic preservation:** Preservation of buildings and façades in historic districts; restoration and reuse of historic building for transportation-related purposes; access improvements to historic sites and buildings.
- 7 **Rehabilitation and operation of historic transportation buildings, structures, or facilities:** Restoration of historic railroad depots, bus stations, canals, canal towpaths, historic canal bridges, and lighthouses; rehabilitation of rail trestles, tunnels and bridges.
- 8 **Preservation of abandoned railway corridors and the conversion and use of the corridors for pedestrian or bicycle trails:** Acquiring railroad rights-of-way; planning, designing and constructing multi-use trails; developing rail-with-trail projects; purchasing unused railroad property for reuse as trails.
- 9 **Inventory, control, and removal of outdoor advertising:** Billboard inventories or removal of nonconforming billboards.
- 10 **Archaeological planning and research:** Research, preservation planning and interpretation; developing interpretive signs, exhibits, guides, inventories, and surveys.
- 11 **Environmental mitigation to address water pollution due to highway runoff or to reduce vehicle-caused wildlife mortality while maintaining habitat connectivity:** Runoff pollution mitigation, soil erosion controls, detention and sediment basins, river cleanups, and wildlife crossings.
- 12 **Establishment of transportation museums:** Construction of transportation museums, including the conversion of railroad stations or historic properties to museums with transportation themes and exhibits, or the purchase of transportation related artifacts.



Roanoke Voyages Corridor



The 12 Types of Transportation Enhancement Activities

The term Transportation Enhancement Activity means any of the following as they relate to surface transportation.

- 1 **Pedestrians and bicycle facilities:** New or reconstructed sidewalks, walkways, curb ramps, bike lane striping, paved shoulders, bike parking, bus racks, off-road trails, bike and pedestrian bridges and underpasses.
- 2 **Safety and educational activities for pedestrians and bicyclists:** Programs designed to encourage walking and bicycling by providing potential users with education and safety instruction through classes, pamphlets, and signs.
- 3 **Acquisition of scenic easements and scenic or historic sites, including historic battlefields:** Acquisition of scenic land easements, vistas, and landscapes, including historic battlefields; purchase of building in historic districts or historic properties.
- 4 **Scenic or historic highway programs including tourist and welcome center facilities:** Construction of turnouts, overlooks, visitor centers, and viewing areas, designation signs, and markers.
- 5 **Landscaping and other scenic beautification:** Street furniture, lighting, public art, and landscaping along street, highways, trails, waterfronts, and gateways.
- 6 **Historic preservation:** Preservation of buildings and façades in historic districts; restoration and reuse of historic building for transportation-related purposes; access improvements to historic sites and buildings.
- 7 **Rehabilitation and operation of historic transportation buildings, structures, or facilities:** Restoration of historic railroad depots, bus stations, canals, canal towpaths, historic canal bridges, and lighthouses; rehabilitation of rail trestles, tunnels and bridges.
- 8 **Preservation of abandoned railway corridors and the conversion and use of the corridors for pedestrian or bicycle trails:** Acquiring railroad rights-of-way; planning, designing and constructing multi-use trails; developing rail-with-trail projects; purchasing unused railroad property for reuse as trails.
- 9 **Inventory, control, and removal of outdoor advertising:** Billboard inventories or removal of nonconforming billboards.
- 10 **Archaeological planning and research:** Research, preservation planning and interpretation; developing interpretive signs, exhibits, guides, inventories, and surveys.
- 11 **Environmental mitigation to address water pollution due to highway runoff or to reduce vehicle-caused wildlife mortality while maintaining habitat connectivity:** Runoff pollution mitigation, soil erosion controls, detention and sediment basins, river cleanups, and wildlife crossings.
- 12 **Establishment of transportation museums:** Construction of transportation museums, including the conversion of railroad stations or historic properties to museums with transportation themes and exhibits, or the purchase of transportation related artifacts.



NATIONAL TRANSPORTATION ENHANCEMENTS CLEARINGHOUSE



Edenton-Windsor Loop



NATIONAL TRANSPORTATION ENHANCEMENTS CLEARINGHOUSE

The Programs

Transportation Enhancements

\$833,502,581 for FY 2009

Apportioned through state DOTs

20% Federal share – some states require more or less

Scenic Byways

\$43,000,000 for FY 2009

Federally administered through grants.gov

20% Federal share



Procedural Notes

- TE funds can't be used as matching funds for a NSBP discretionary grant or vice versa
- Application & Pre-App
 - Notice of application process and schedule
 - Referrals
- Funding & Contracts
 - Leverage \$\$ through dual-funded projects
 - Successive or adjoining phases
- Project Development
 - Coordinate timing of funding and phases



For More Information

- www.enhancements.org
 - State Profiles
 - Project Examples
 - Give us a call at 1-888-388-NTEC

