
An aerial photograph of a scenic byway, showing a winding road through a forested area. The road is light-colored and curves through the trees. The background is a mix of green and brown, suggesting a natural, undeveloped landscape.

Developing Historic Byway Designation Criteria

National Scenic Byway
Conference
August 25, 2009



An aerial photograph of a road interchange with several lanes and overpasses. The scene is surrounded by green trees and a building with a red roof is visible in the lower right. The image is faded and serves as a background for the text.

**Transportation is about more than
asphalt, concrete and steel -- it's about
partners and connections**

- - Rodney Slater
Former U.S. Secretary of Transportation

Goals for this Presentation

- Provide Background Information – Kansas Scenic Byways Program
- Describe New Historic Criteria
- Present Issues for Discussion
- Conversation



Scenic
SBYWAY



Program Purpose

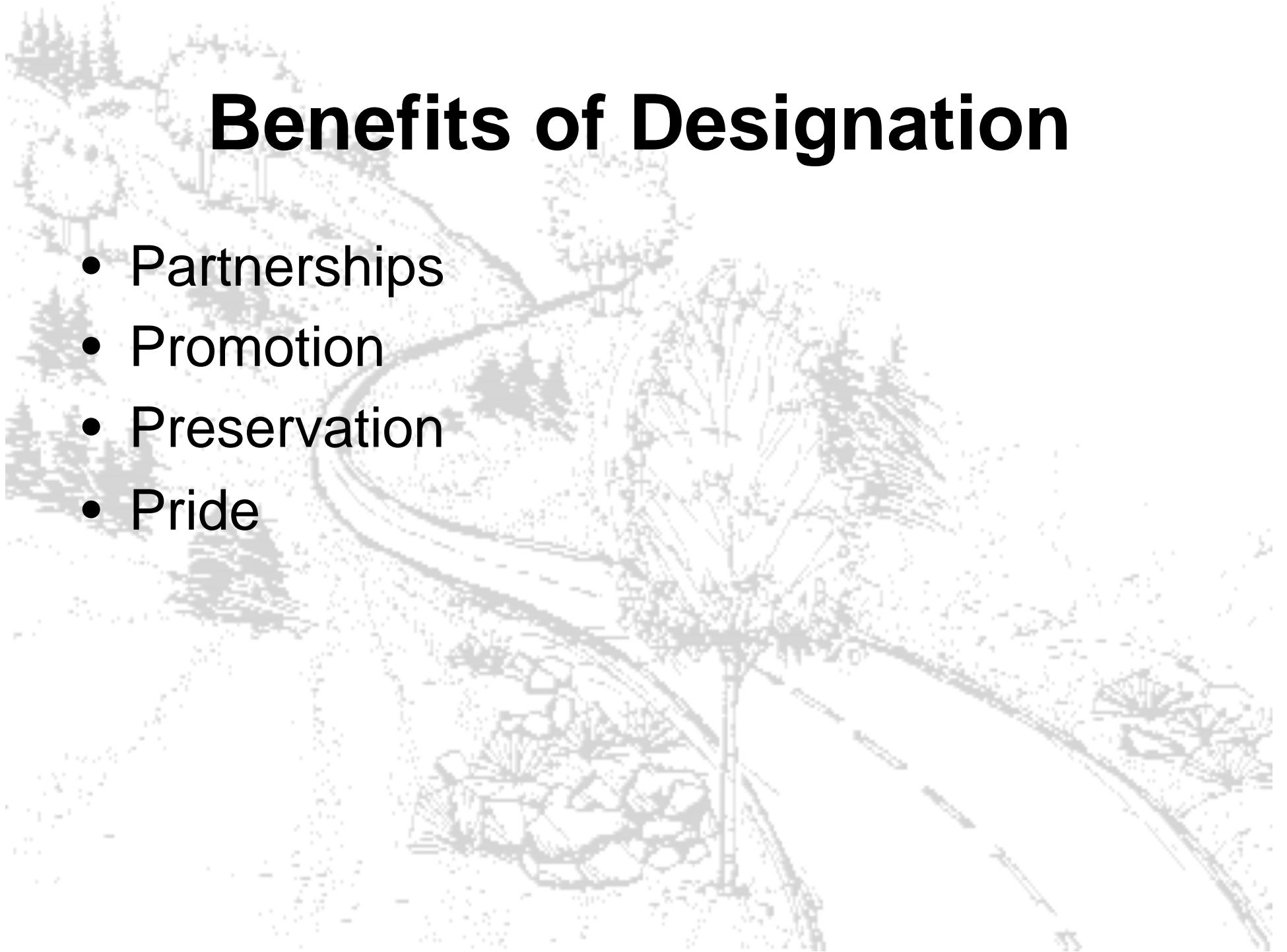
- Identify scenic resources in Kansas
- Preserve them
- Enhance them
- Promote them
- Partner with locals

Considerations for Designation

- Uniformly scenic throughout length
- Paved roadway capable of carrying tour buses & RVs
- Provide travelers opportunity to see beauty of Kansas
- Get folks off the beaten path to linger longer
- Grassroots-based community initiative

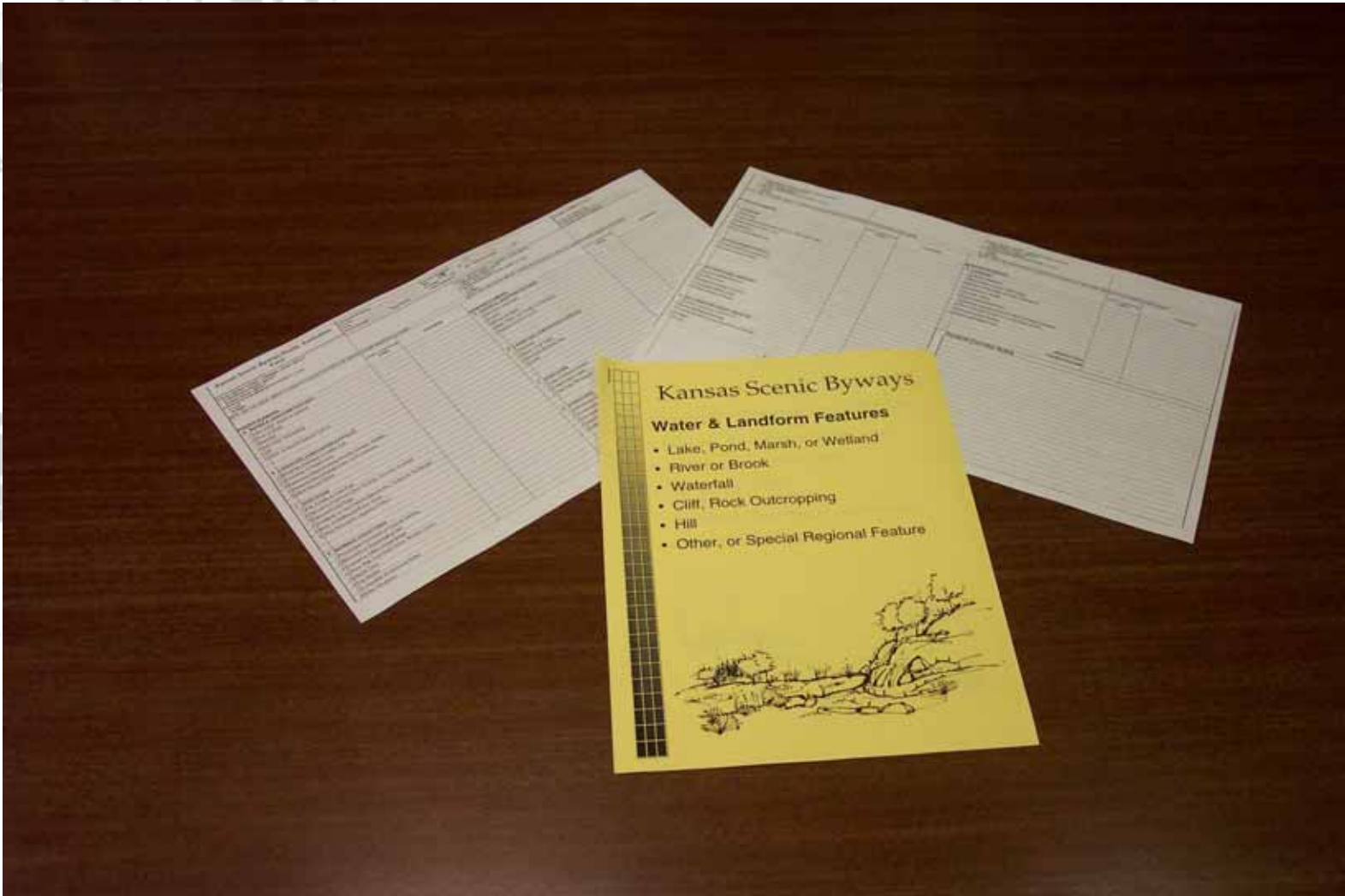
Benefits of Designation

- Partnerships
- Promotion
- Preservation
- Pride



Designation Process

- Provide technical assistance to locals
- Locals nominate route
- Locals and Clearinghouse evaluate route
- Locals develop Corridor Management Plan
- Locals hold meetings – public and landowners
- KSBC recommends designation
- Implementation



Kansas Scenic Byways

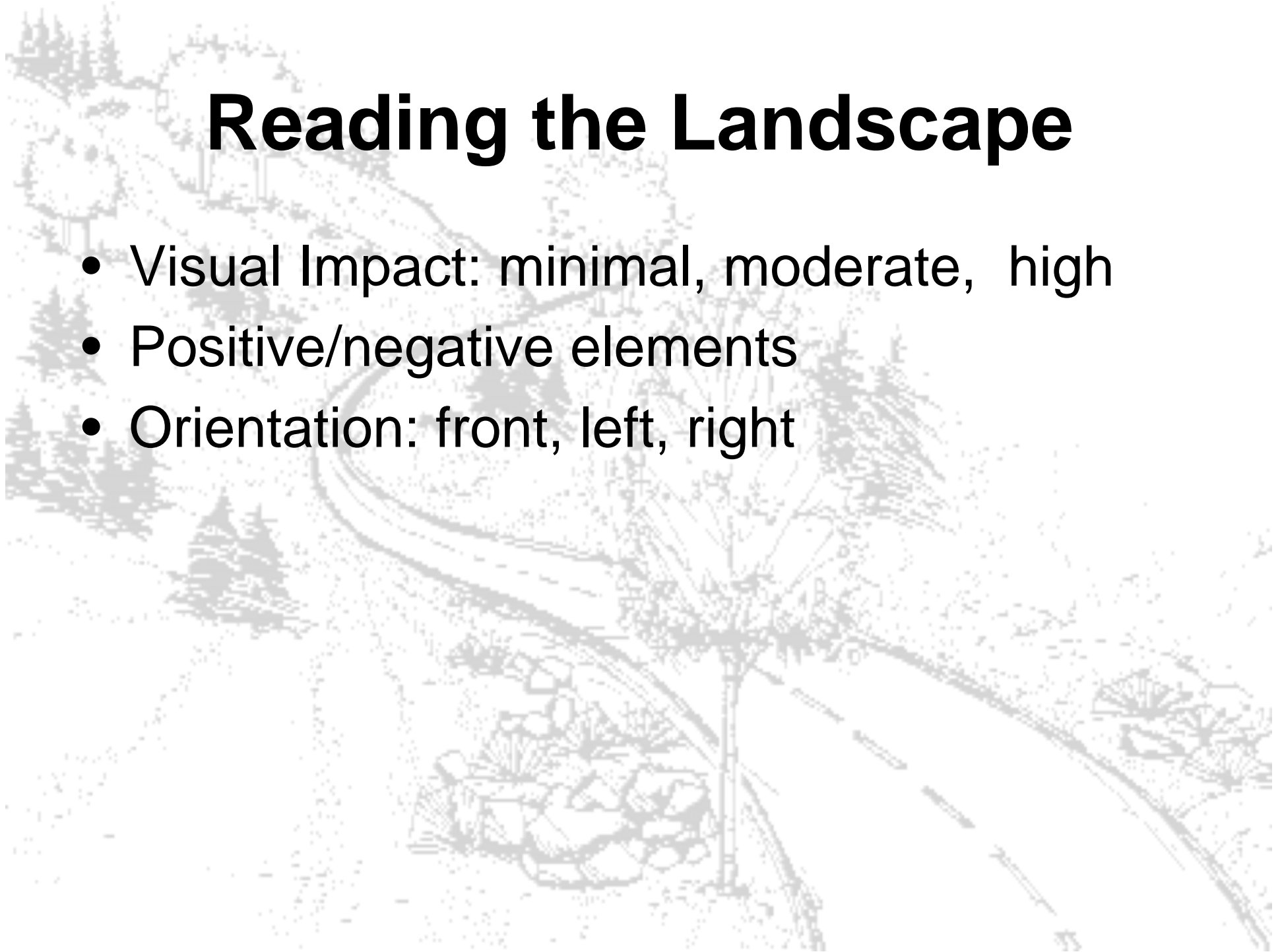
Water & Landform Features

- Lake, Pond, Marsh, or Wetland
- River or Brook
- Waterfall
- Cliff, Rock Outcropping
- Hill
- Other, or Special Regional Feature



Reading the Landscape

- Visual Impact: minimal, moderate, high
- Positive/negative elements
- Orientation: front, left, right



Reading the Landscape Elements

- Water and Landform Features
- Landscape Composition and Effects
- Vegetation
- Manmade Structures
- Land Use Patterns
- Roadway Characteristics
- Recreational Amenities
- Cultural/Historical Amenities





Interest in Historic Criteria

Recognition of Rich History of State
Organizations Interested
National Byway Ties
Other

Process

- Research Other States Criteria, NTHP and Other National Organizations
- Survey Historic Trails Organizations
- Develop Principles for Criteria
- Develop Criteria
- Present to Organizations

Principles

- Identify, Preserve, Enhance and Promote
- Integrity of Intrinsic Qualities
- Mirror Scenic Nomination Procedures
- National, Regional, State Historic Significance
- Visitor Experience
- Local Support and Commitment

Kansas Scenic Byways Program Historic Roads Evaluation Form		Odometer Reading _____ Direction of Travel _____ County _____ Mile _____ of _____ Town _____ Shoulder _____ Yes _____ No _____ Roadway Width _____ (FT.) Route Number _____ Road Name _____ Team Members _____		SCENIC AND HISTORIC ELEMENT TOTALS	
VISUAL IMPACT CODES 1=MINIMAL VISUAL IMPACT 2=MODERATE VISUAL IMPACT 3=HIGH VISUAL IMPACT PRESENTATION/ORIENTATION CODES F= Front L=Left R=Right				POSITIVE SUBTOTAL _____ LESS NEGATIVE SUBTOTAL _____ = TOTAL ELEMENTS _____	
NOTE: USE THE VISUAL IMPACT CODING IN CONJUNCTION WITH THE PRESENTATION/ ORIENTATION CODES.		NOTE: USE THE VISUAL IMPACT CODING IN CONJUNCTION WITH THE PRESENTATION/ ORIENTATION CODES.			
POSITIVE ELEMENTS		Level I: Local Group Coding	Comments	NEGATIVE ELEMENTS	
A WATER & LANDFORM FEATURES				A WATER & LANDFORM FEATURES	
1 Lake, Pond, Marsh or Wetland				1 Obtrusive Land Scars	
2 River Or Brook				2 Erosion	
3 Waterfall				3 Mining Operation	
4 Cliff, Rock Outcropping				4 Major Utility Line Corridor or Substation	
5 Hill				5 Angular Road Cut or Fill	
6 Other, or Special Regional Feature					
B LANDSCAPE COMPOSITION & EFFECTS				B LANDSCAPE COMPOSITION & EFFECTS	
1 Enframed, Enclosed, or Valley View				1 Litter/Junk	
2 Panoramic or Distant View				2 Heavy Truck Traffic	
3 Ephemeral Effect (Grazing Animals, Sunsets, Wildlife)				3 Structures Blocking View	
4 Seasonal Effect (Foliage Color, Ice Formations)				4 Graffiti	
5 Other Natural Effects					
C VEGETATION				C VEGETATION	
1 City, County or Town Park				1 Trees in Massive Decline	
2 Agriculture Pattern (Contour Plowing, Terracing, Orchard)				2 Evident Clear Cutting	
3 Field and Forest Edge				3 Tree Tops "flat-topped"	
4 Woodland, or Tree Pattern (Species Mix, Hedgerow, Windbreak)					
5 Mass of Wildflowers/Prarie Grass				D MANMADE STRUCTURES	
6 Other Noteworthy Vegetative Effects				1 Buildings in Town Incompatible with Historic Era	
D MANMADE STRUCTURES				2 Incompatible Rural Buildings	
1 Picturesque Farmstead or Unusual Building				3 Incompatible Fence or Wall	
2 Monument or Archeological Site				4 Dilapidated Building	
3 Covered or Other Unique Bridge				5 Dilapidated Fence or Wall	
4 Stone Wall, Post Rock Fence, Wooden Fence					
5 Distant Town					
6 City Skyline					
7 Architectural Styles Compatible with Historic Era					
8 Other Structures					

Criteria

- Historic Resources
- Historic Significance – National, Regional
- Intactness
- Historic Sense of Place
- Preserved Historic Features
- Paved
- Sufficient Length

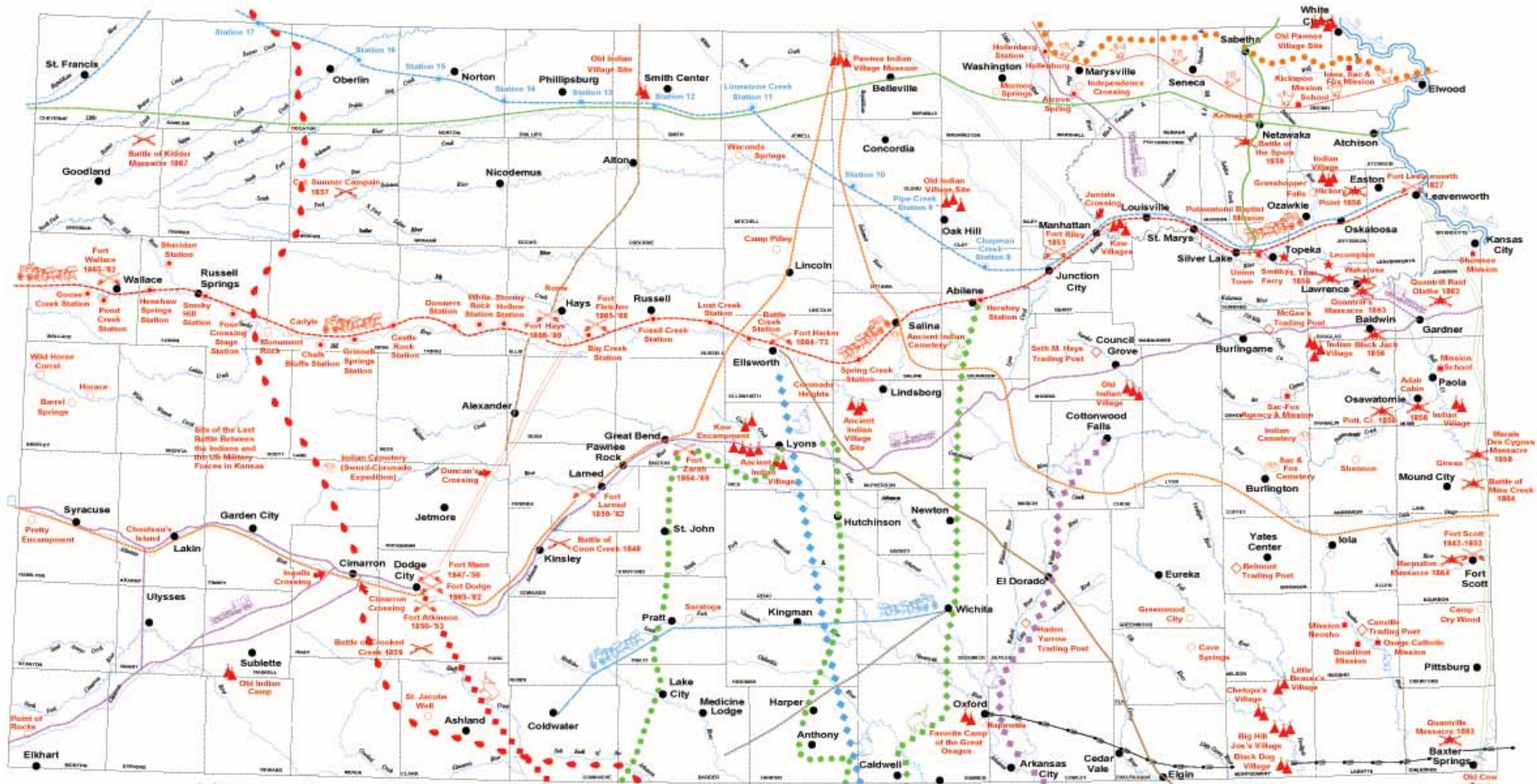
Nomination Process

- Local Nomination
- Mile-by-Mile Route Evaluation
- KSBC Analysis
- Public Meetings
- Corridor Management Plan
- Local Government Support
- Designation and Implementation

Issues and Challenges

- Length of Possible Proposed Routes
- Public Outreach
- Historic Route Integrity
- Continuing Interest and Appeal to Visitors
- Local Commitment
- Authentic Experience
- Strong Sense of Place

19 TH CENTURY KANSAS TRAILS



- | | | | | |
|---------------------|---|---|---|--------------------------------------|
| Fort Locations | Ellsworth Cattle Trail 1872-1874 | Captain Zebulon Pike's Route 1806 | Oregon Trail 1838-1870 | Black Dog's Hunting Route |
| Battle Sites | Chisholm Cattle Trail to Abilene 1867-1871 | Lewis and Clark 1804-1806 | Leavesworth-Pike's Peak Express 1858-1860 | Last Indian Raid Through Kansas 1878 |
| Border Battle Sites | Cattle Trail to Dodge City 1873-1885 | Fort Leavenworth-Fort Scott Military Road 1838-1855 | Parallel Road 1859-C. 1885 | Mission School Locations |
| Old Town Sites | Cannon Ball Stage Coach Road 1874-C. 1889 | Fort Dodge to Fort Hays Route 1867-C. 1880 | Pony Express Trail 1860-1861 | Indian Burial Sites |
| | Santa Fe Trail 1821-1872 | Fort Riley-Fort Kearney Cavalry Route 1853-1871 | St. Joseph, Mo. to California Route 1842-1870 | Lane Trail |
| | Smoky Hill or Butterfield Overland Dispatch 1858-1870 | Texas Cattle Trail | Pawnee Trail | Kiowa Trail |
| | Nathaniel Boone's Route 1843 | Fayetteville to California, Cherokee Trail | Custer's Trail | |

Prepared and Published by
 HENRY COUNTY HISTORICAL SOCIETY
 1001 Commercial Street
 Lawrence, Kansas 66044
 ©2011 Copyright by
 Henry County Historical Society

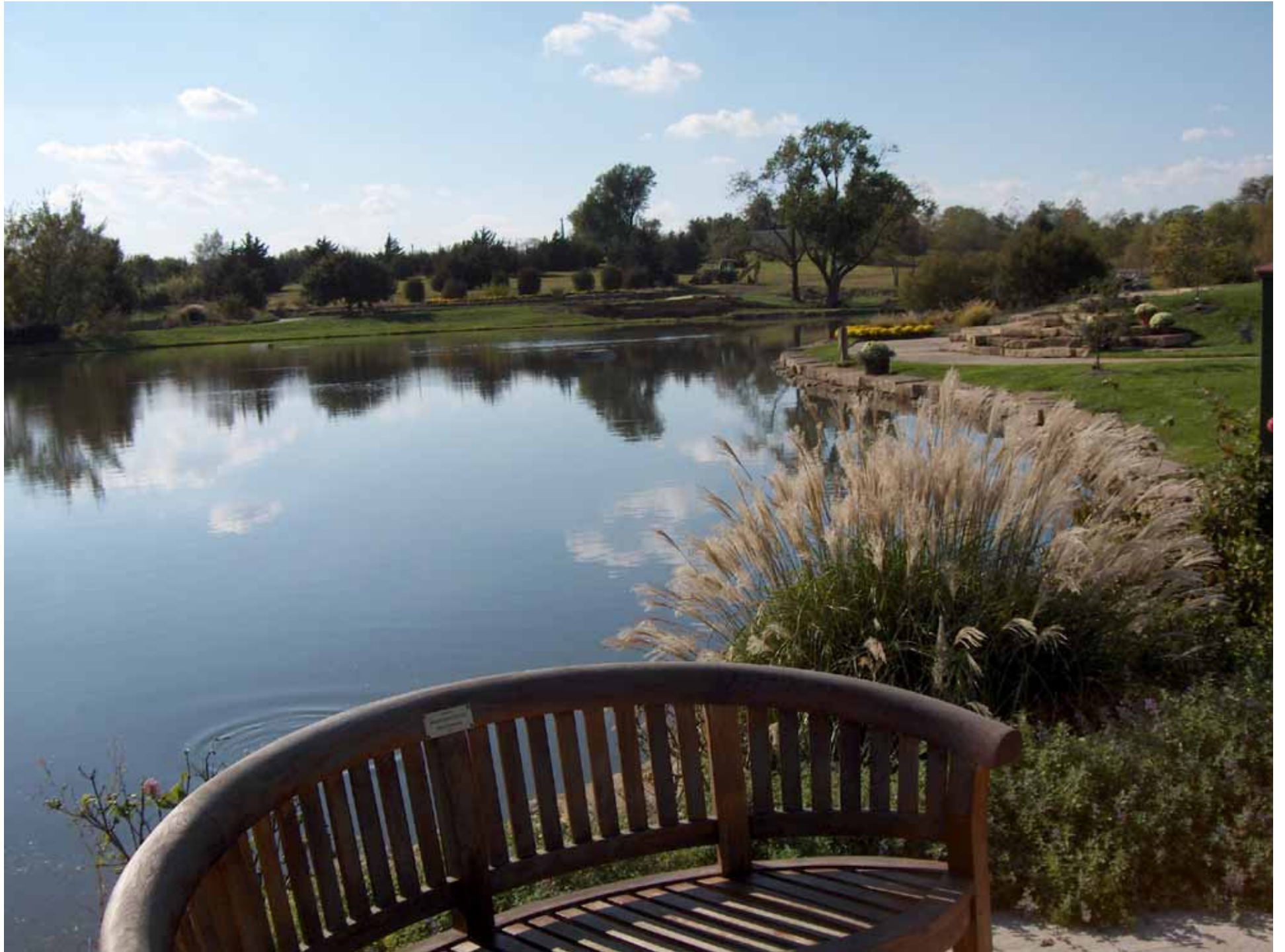






















**Questions?
Comments?
Conversation?**

An aerial, black and white photograph of a scenic landscape. A winding road curves through a dense forest of various trees. In the lower center, a stone bridge crosses a small stream. The overall scene is peaceful and natural.

Enjoy Driving Kansas Byways!

Deborah Divine
Consultant

785-452-0166